

ASHE संस्कृती

Today, Ashe Controls Pvt Ltd is renowned for its innovative, precise and reliable range of instrumentation products. As we proudly commemorate our 24th anniversary, we reflect upon the remarkable achievements that have defined our journey so far.

Over the past two decades, we have consistently pushed boundaries, transforming challenges into opportunities and delivering cutting-edge solutions. Our commitment to excellence has earned us global trust and loyalty, establishing us as leaders in the instrumentation industry.

Through relentless research and development, we have revolutionized industries with our ground-breaking products. Our instruments consistently set new benchmarks for accuracy, reliability and efficiency, ranging from high-tech process monitoring systems to advanced control devices.

However, our true strength lies not only in our excellent product range, but also in our exceptional team of dedicated professionals. They are the heart and soul of our organization, upholding our unwavering commitment to superior quality and service, and enhancing our company's reputation.

Over the years, we have fostered a culture that encourages growth, collaboration and continuous improvement. Each member of the Ashe Controls family brings a unique set of skills and experiences, which when combined, create a formidable force that drives our innovation and success.

Today, we express our deepest gratitude to our dedicated team,



Celebrating
24
YEARS
of excellence

our esteemed clients, and our valued partners, who have been instrumental in our success. Together, we have built a legacy of innovation, trust and reliability.

Our 25th year represents more than just a milestone. It symbolizes a gateway to a future brimming with exciting possibilities. We eagerly anticipate the challenges ahead, confident in our unwavering spirit of ingenuity. Our commitment remains steadfast to introducing even better products that enhance our customers' processes.

As we look forward, our goal is not just to maintain our position as industry leaders, but to strengthen and consolidate it. We pledge to continue our relentless pursuit of manufacturing excellence, always ensuring that our products meet the highest standards of quality and reliability. When customers choose Ashe Controls, they are investing in instruments that deliver uncompromising performance and durability.

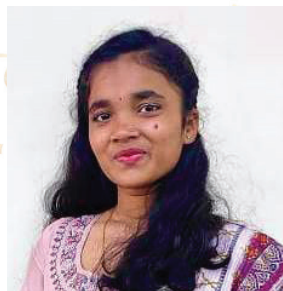
In conclusion, Ashe Controls Pvt Ltd stands poised at the threshold of its 25th year, eager to embrace the challenges and triumphs that await us. With a vibrant spirit and unwavering commitment to excellence, we are ready to soar to new heights, leaving an indelible mark on the instrumentation industry. Join us on this exhilarating journey as we continue to redefine what is possible, introducing a new generation of instruments that will shape the future.

Here's to 24 years of achievements, and to many more decades of success and innovation ahead!!

Congratulations!
We are proud
of you

Our SSC Board Achievers

Swaroop Hatimkar -
88%
(Daughter of
Madhura Hatimkar)



Atharva Gorivale -
65%
(Son of
Jyoti & Santosh Gorivale)

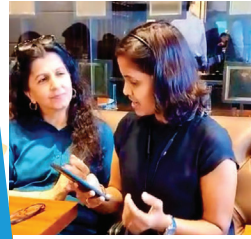




Financial Year End

Celebrations

at Sigree on 7th April



Festivals



Akshaya Tritiya
22nd April



Vat Purnima
3rd June



Maharashtra
Day
1st May



Jyoti Ma'am (May 24th) Birthday Celebrations!



Birthdays



Maharashtrian Thali prepared by Ashe Team



Sachin Kharshinge
10th April



Mahesh Kademani
18th April



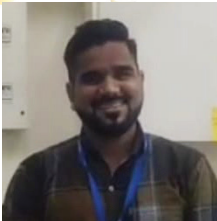
Urmila Vanjare
29th April



Sagar Gaikwad's son Vihaan
(24th May)



Ashe Team at Geeta Talreja's son Mayank's party



Ashish Shinde
18th May



Raj Bansode
2nd June

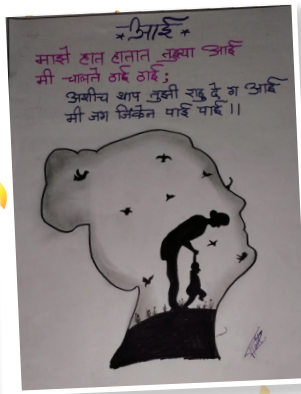


Ajay Khandagale
19th June

Art Corner



Atharva Bansode - Man of the Match, Under 14 Cricket, Pune Club (Son of Raj Bansode)



Sketch and Poem by Tanishka Patil (Daughter of Mangala Patil)



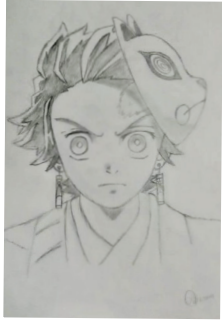
Hrushabh Patil - bronze & silver medals in relay race (Son of Mangala Patil)



Devansh - 1st Day of School (Son of Mohini Roman)



by Shreeyansh (Son of Dipali Jasud)



Drawing by Atharva (Son of Jyoti & Santosh Gorivale)



Painting by Rachana Pawar (Sister of Swapnil Pawar)



Drawing by Diti (Daughter of Sonal Gadmale)



Hanuman Sketch by Atharva (Son of Jyoti & Santosh Gorivale)



Dipali Jasud - Family Picnic at Sula Vineyards, Nashik.



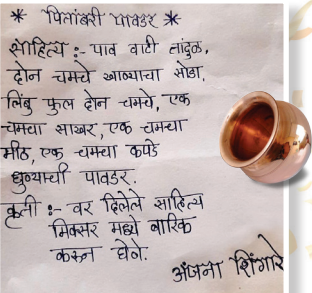
Sonal Gadmale with daughter Diti & Swapnil Pawar at Snow World



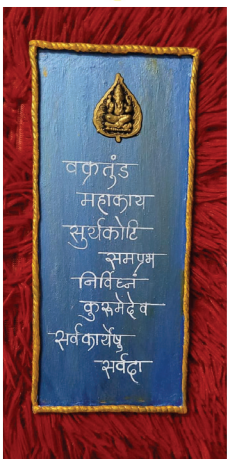
Akshay Kumar Chirame with his wife at cousin's wedding



Shravani & Atharva Bansode (children of Raj Bansode) on Shivaji Jayanti



How to make Pitambari Powder - By Anjana Shingare



Wall Decor by Deepali Kadam

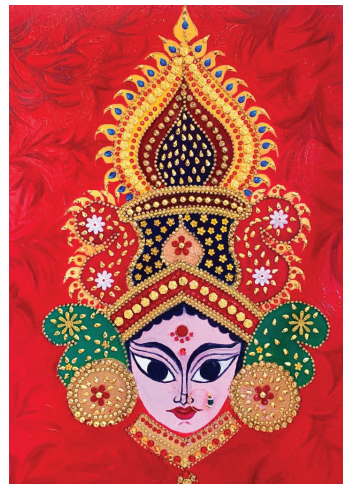
Tiny Tots on 'Ashadhi Ekadashi'



Aarohi (D/o of Ashish Shinde)



Rakshit (Nephew of Mansi Latke)



Durga Maa Painting by Mrs. Jyoti Alwani



Lippan Art by Deepali Kadam

What is the meaning of 'GURU'

'Gu' means ignorance or darkness
'Ru' means removes
'Guru' is one who removes our ignorance or darkness in one minds.

You can order everything...
You can't hunt a Guru...
Never can a disciple go to the Guru...
Guru always comes to you as the bee comes to the flower.

Incarnations of God, Great Saints have also learnt at the feet of a Guru.
A Guru is also called an Acharya because he teaches by his very conduct in life.

In case a Guru takes you under his wing, to guide you, protect you, to lead you - that is the greatest blessing.

- Swami Chinmayananda
(contributed by Mrs. Jyoti Alwani)